

## Data Sheet

### Brass Form A.B.E.E.

Heating & Plumbing Valves Production  
Mandra Attica, 19600  
Athens, Greece

Number - Revision: 001 - 2

April 2012

---

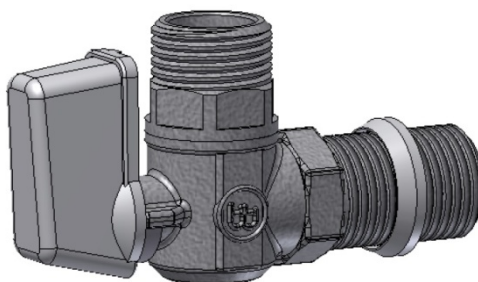
#### TECHNICAL CHARACTERISTICS

---

<i>Product Type:</i>	<b>Angle Ball Valve Chrome &amp; Bronze</b>	<i>Product Series:</i>	<b>Status &amp; Petit</b>
<i>Product ID:</i>	<b>211, 2110, 212, 2120, 213, 2130, 311, 3110, 312, 3120</b>	<i>Available Dimensions:</i>	<b>1/2" x 1/2" 3/4" x 1/2" 3/8" x 1/2"</b>

---

**ID. 211**




---

#### SPECIAL FEATURES

---

- Long connection thread 1/2
  - Aluminum handle with plastic cover
  - Quality control (1 by 1)
  - 5 year guarantee
  - Rosette Support Ring
- 

---

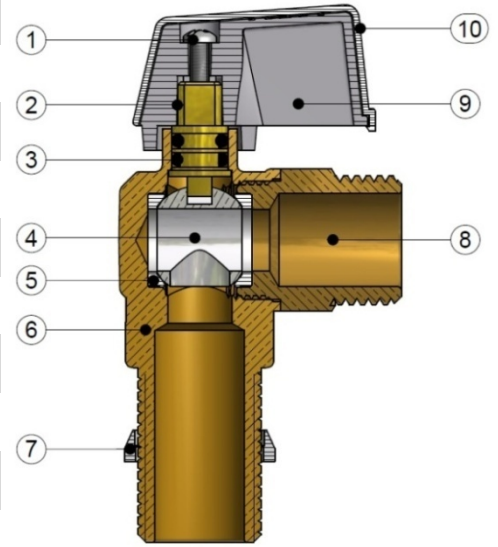
#### TECHNICAL STANDARDS

---

- Raw Material Specification: Hot Forged brass according to EN 12165 (CW 617N) and brass rod according to EN 12164 (CW 614N)
  - Coating: Nickel (Ni) and Chromium (Cr) Plated
  - Threads: according to ISO228
  - Maximum Operation Pressure: PN 16 bar
  - Maximum Operation Temperature: from -5 °C up to 95 °C
  - Suitable for drinking water
  - Suitable for plumbing and heating systems
-

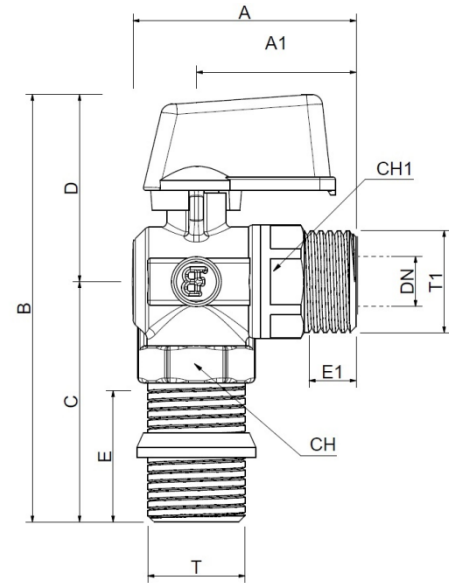
### TECHNICAL FEATURES

1	Screw DIN 7985	M3x10, Galvanized
2	Spindle	Brass CW614N
3	O rings	NBR Sh70 (x 2 pcs.)
4	Ball	Brass CW614N, Polished, Chromium plated
5	Ball Seats	Protogenic PTFE (x 2 pcs.)
6	Body	Hot Forged Brass CW617N
7	Rosette Support Ring	Polyethylene (PE), Plastic
8	Valve Fitting	Hot Forged Brass CW617N
9	Handle	Aluminum, Chromium plated
10	Handle Cover (white)	Polypropylene (PP), Thermoplastic Polymer



### MAIN DIMENSIONS

	DN	A	A1	B	C	D	E	E1	CH	CH1	T	T1	
<b>STATUS</b>	<b>211(L)*</b>	10	45	33	86	48	38	28	9	20	20	1/2	1/2
	<b>211(S)*</b>	10	45	33	76	39	38	18	9	20	20	1/2	1/2
	<b>212(L)</b>	10	45	33	86	48	38	28	9	20	22	1/2	3/4
	<b>212(S)</b>	10	45	33	76	39	38	18	9	20	22	1/2	3/4
	<b>213(L)</b>	10	53	40	86	48	38	28	9	20	20	1/2	3/8
	<b>213(S)</b>	10	53	40	76	39	38	18	9	20	20	1/2	3/8
	<b>415</b>	10	64	52	65	28	37	12	28	-	20	3/4	1/2
<b>PETIT</b>	<b>311</b>	7,5	42	28	76	28	33	28	11	-	-	1/2	1/2



\*L: Long thread  
\*S: Short thread

all dimensions in mm

On behalf of

Technical Department

(Signature available upon request)