



USER INSTRUCTIONS FOR SMART & POWER SERIES

Step 1

Place the metallic installation base of the device on the wall with 2 screws and adapt the device STOPCOR on the base

Step 2

Connect the yellow-green cable which is attached to the T-fitting with the embedded cap and titanium spike to the cold water inlet.

Step 3

Connect externally the red cable on the metallic pipe with the tightener, after having removed the cover of the copper cable.
Alternatively connect the cable on the T-fitting.

Step 4

Activate the device by adding 10ml tap water for the Smart Series device or 20ml tap water for the Power Series device through the hole on its upper side, using the syringe.

Note the installation date and repeat the above steps once a year (Maintenance)

Step 5 (Optional)

A. Place the indication meter, which includes a magnet, on the upper side of the STOPCOR base, in order to stabilize it.

B. Connect the first black cable of the indication meter to the metallic terminal of the basis's yellow cable.

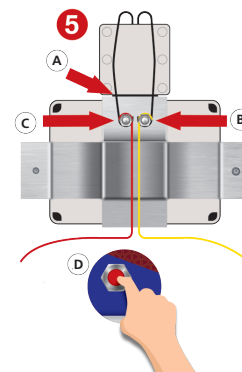
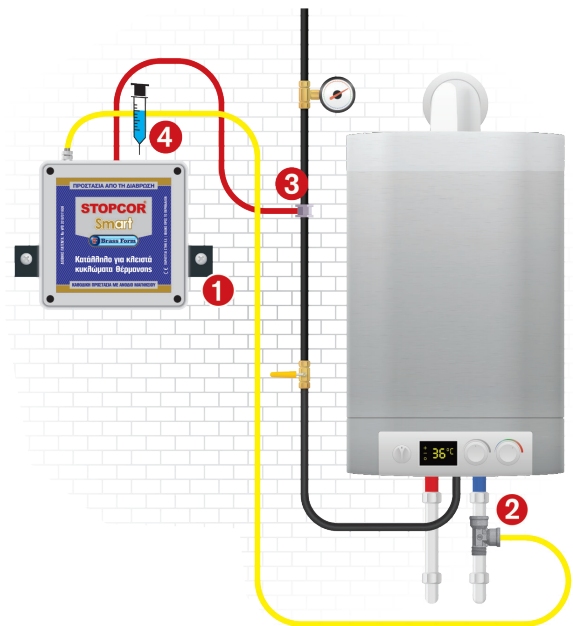
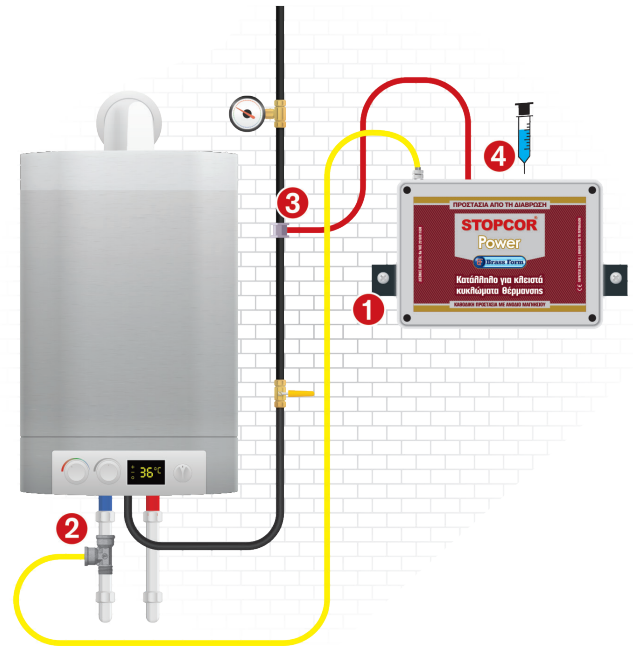
C. Connect the second black cable of the indication meter to the metallic terminal of the basis's red cable.

(Make sure that there is proper metal contact and therefore conductivity)

D. By pressing the indicator's button check the proper operation of STOPCOR

- If the voltage is $-1V$ or more the device is working properly.

- If the voltage is $-1V$ or less the device needs to be maintained or to be replaced.



INDICATION METER PROPER OPERATION CHECK

The indicator is used to check the STOPCOR's voltage by placing the first pole of the meter to the cable that is located on the upper side of the device and the second pole to the screw aside. It is not required to disconnect the grounding.

- If the indication is $-1V$ or more the device is working properly.

- If the indication is below $-1V$ the device needs to be replaced.